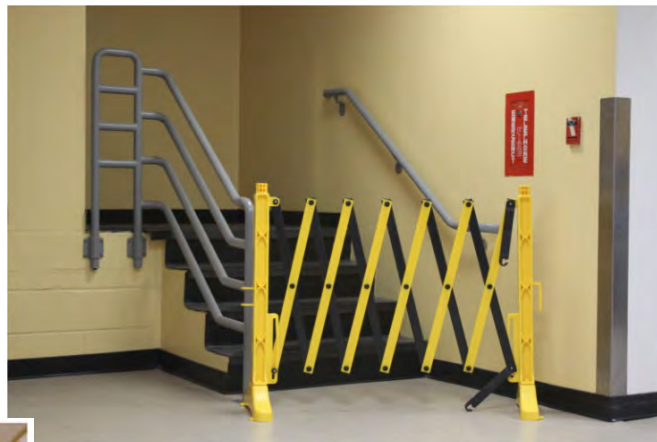


Xpandit® Plastic Expandable Barricade

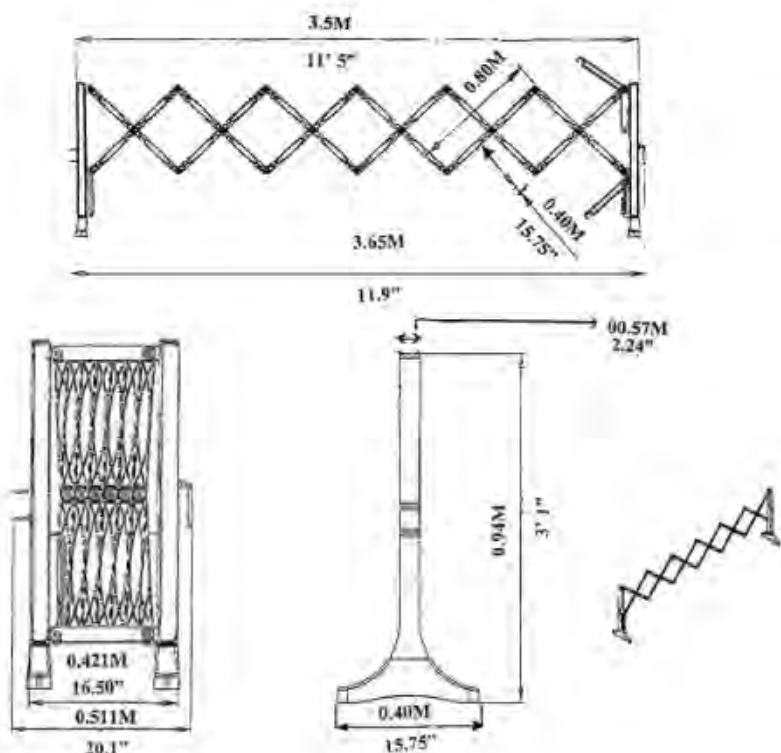
The Only Expandable Barricade on the Market with a Double-Latch System to Ensure Maximum Durability, Portability and Safety

The Xpandit® is the long lasting indoor safety solution you've been waiting for. The Xpandit® is the perfect device for any demarcation situation. Sturdy, durable, and highly visible, the Xpandit® makes it clear; "Don't come near."

With a storage size of just over 1 ft., and a total possible span of over 11 ft., the Xpandit® is the premier plastic expandable barricade on the market, and a must have product for any facility safety inventory.



XPANDIT SPECIFICATIONS



Length (open): 3.5M/11'5" (138")
Length (close): 0.42M/16.5"
Height: 0.94M/3' 1" (37")
Weight: 6.85kg/15.1 lbs
Thermal resistance: (+)55C (-)20C
= (+)131F (-)4F
Color: Yellow/Black
Features Two Hooks To Help Stabilize The Unit While Closed
Recyclable Material
Minimal Assembly required
Wheels/Casters Included