



# STEEL PIPE SIZE CHART



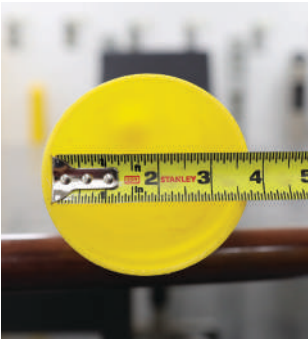
Nom. Size [in.]	Sch.	Lb/Ft	Wall	I.D.	O.D.	Approx. Steel Circum.	I.D.
3" (3.5" O.D.)	40	7.58	0.216"	3.068"	3.5"	11"	3.625"
	80	10.25	0.3"	2.9"			
3.5" (4" O.D.)	40	9.11	0.226"	3.548"	4"	12.5"	4.125"
	80	12.51	0.318"	3.364"			
4" (4.5" O.D.)	40	10.79	0.237"	4.026"	4.5"	14" - 15"	5"
	80	14.98	0.337"	3.826"			
5" (5.563" O.D.)	40	14.62	0.258"	5.047"	5.563"	17.5"	5.875"
	80	20.78	0.375"	4.813"			
6" (6.625" O.D.)	40	18.97	0.28"	6.065"	6.625"	21" - 22"	7"
	80	28.57	0.432"	5.761"			
8" (8.625" O.D.)	40	28.55	0.322"	7.981"	8.625"	27" - 27.5"	8.875"
	80	43.39	0.5"	7.625"			
10" (10.75" O.D.)	40	40.48	0.365"	10.02"	10.75"	33.5" - 34"	10.875"
	80	64.43	0.594"	9.562"			
12" (12.75" O.D.)	40	53.52	0.406"	11.938"	12.75"	40.25"	12.875"
	80	88.63	0.688"	11.374"			

Find Our Bollards and Covers at [TamisCorp.com](http://TamisCorp.com) and [HighwaySignals.com](http://HighwaySignals.com).

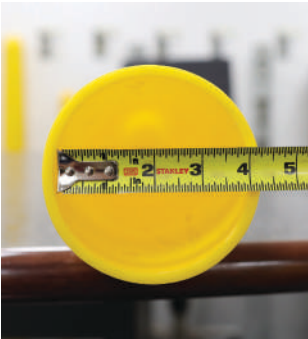


# STEEL PIPE SIZE CHART

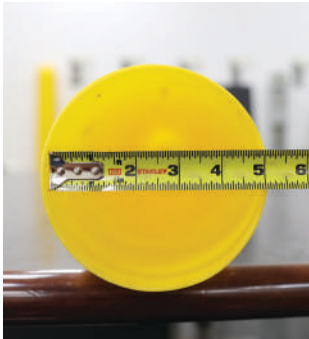
**3" Cover  
for 3" Pipe**



**3 ½" Cover  
for 3½" Pipe**



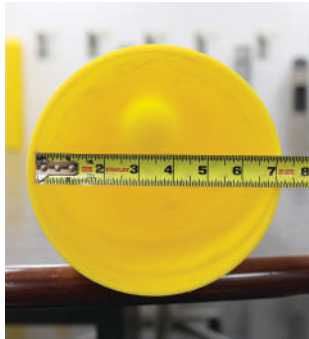
**4" Cover  
for 4" Pipe**



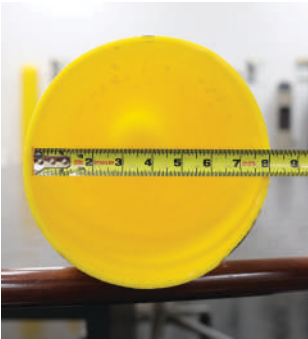
**5 ½" Cover  
for 5" Pipe**



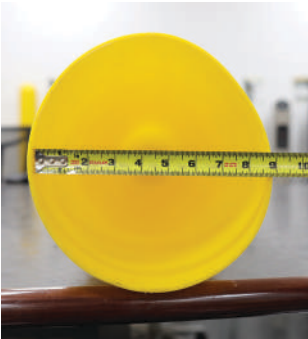
**6" Cover  
for 6" Pipe**



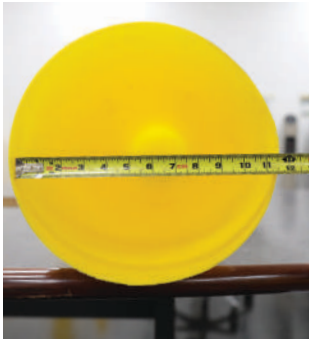
**7 ½" Cover  
for 7" Pipe**



**8" Cover  
for 8" Pipe**



**10" Cover  
for 10" Pipe**



**12" Cover  
for 12" Pipe**

