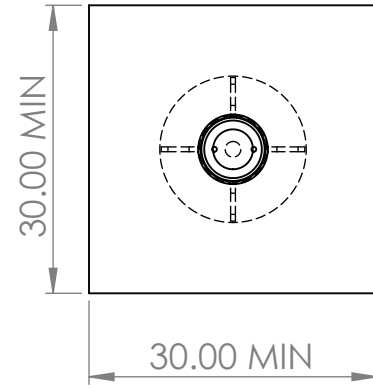


2

1



C40/S30 IMPACT BOLLARD SPECIFICATION SHEET



TOP VIEW

SPECIFICATIONS:

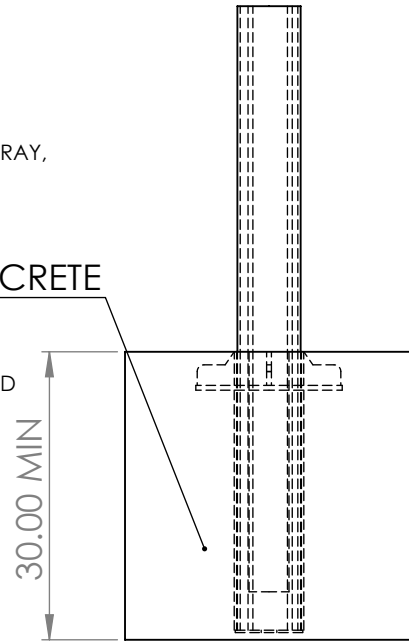
- ASTM C40 P1 STANDARD
- F3016 / F3016M S30 P1 STANDARD
- STOPS A 5000LBS VEHICLE AT 30MPH WITH LESS THAN 30 INCH OF PENETRATION
- SIZE:** 36" ABOVE GROUND APPROX 28" BELOW
- MATERIAL:** 6" STEEL PIPE WITH STEEL GUSSETS
- TWO VERTICAL REBAR
- *C40 REM GROUND CAP SOLD SEPARATELY
- FINISH:** RED OR GREY PRIMER

BOLLARD COVER FOR PRODUCT AVAILABLE IN COLORS BELOW UPON REQUEST
 COLOR: 13 STOCK STANDARD COLORS AVAILABLE
 (285 BLUE, BLUE, URBAN BRONZE, RED, YELLOW, WHITE, BROWN, FOREST GREEN, GRAY, ORANGE, 402 GRAY, BLACK, LIME GREEN)
 ANY COLOR MATCH AVAILABLE WITH PANTONE NUMBER

-INSTALLATION:

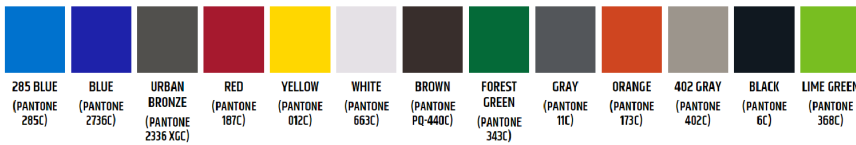
1. SQUARE CUT, AUGER OR TRENCH AREA WITH MIN 30"x30"x30" AREA
 2. SET BOLLARD, TYPICALLY SET ON MASONRY BLOCK
 3. FILL AREA TO TOP OF GUSSET WITH 4000 PSI CONCRETE
- *CAN BE INSTALLED AS A SINGLE BOLLARD OR BOLLARD ARRAY WITH UNRESTRICTED SPACING

CONCRETE



FRONT VIEW

BOLLARD COVER COLOR CHART

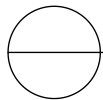
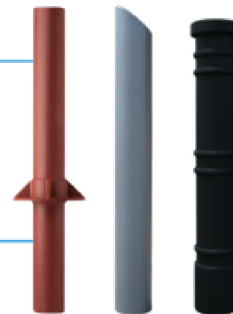


STOP 5,000 LBS. VEHICLE AT 30 MPH

STANDARD & CUSTOM COLORS AVAILABLE

ENGINEERED & INDEPENDENT TESTED

STEEL INSERTS AVAILABLE FOR 10" COVERS



C40/S30 BOLLARD

TRAFFIC IMPACT C40/S30
 BOLLARD C40, C40 REMOVABLE

NOTE*
 AVAILABLE IN FIXED OR REMOVABLE OPTIONS

TITLE:
C40/S30 VEHICLE IMPACT BOLLARD

DWG NO.
 CU40 OR C40 REM

A

SCALE: 1:10

SHEET 1 OF 1

2

1

B

B

A

A